

## Gerbera ColorBloom™ F<sub>1</sub> Series

(*Gerbera jamesonii*)

Potted Plants Culture (revised 11/08/23)

### Stays tidy for smaller pots

ColorBloom stays compact, so it won't get too full or leafy, allowing the colourful blooms to show through in quarts/11-cm pots. Faster to flower by around 10 days, ColorBloom beats the competition to market. First-time plant buyers will love the exciting, non-fading colours and easy care of this indoor/outdoor plant.

**Plug crop time:** 6 to 7 weeks

**Transplant to finish:** 6 to 10 weeks

- The ColorBloom series is specially designed for the quart/11-cm retail market.
- ColorBloom is the most uniform series on the market, with the best performance for consumers.
- The series is around 10 days faster to flower than competitors.
- More uniform with a shorter flower window.
- It has a higher amount of usable plants due to better seed quality.
- Offers a compact plant habit that requires less to no PGRs.
- Series holds its colour better and won't fade in high light.

## General Information

Exposure	Bloom Season	Height	Spread	Spacing
Partial Sun	Early Spring, Spring, Late Spring, Summer, Late Summer, Autumn, Winter	4-6 in. (10-15 cm)	6-8 in. (15-20 cm)	8-10 in. (20-25 cm)

## Germination

Seed Form	Recommended Plug Size	Seeds/Cell	Plug Crop Weeks	Days from 50% to maximum germination	Initial Media pH/EC (1:2)	Cover Seed
COT	128	1	6-7	4-7	5.5-5.8 pH 0.5-0.7 mmhos/cm	Light cover

## Plug Production

	Stage 1	Stage 2	Stage 3	Stage 4
<b>Moisture</b>	Level 5	Level 4	Level 3	Level 3
<b>Temperature</b>	70-74°F (21-23°C)	68-70°F (20-21°C)	68-70°F (20-21°C)	66-68°F (19-20°C)
<b>Light</b>	Optional	2,000-2,500 f.c. (21,500-26,900 Lux)	2,000-2,500 f.c. (21,500-26,900 Lux)	2,000-2,500 f.c. (21,500-26,900 Lux)
<b>Fertiliser</b>	Less than 100 ppm N (Less than 0.7 EC)	Less than 100 ppm N (Less than 0.7 EC)	100 to 175 ppm N (0.7 to 1.2 EC)	100 to 175 ppm N (0.7 to 1.2 EC)

## Propagation Key Tips

Don't water with cold water. Use water with a minimum temperature of 60°F/16°C. Watering with cold water results in deformed leaves and disturbs plant growth.

## Growing on to Finish

Growing on Temperature	Target Media pH/EC (1:2)	Fertiliser	Daylength
(day) 66-68°F (19-20°C) (night) 62-66°F (17-19°C)	5.5-6.0 pH 0.5-1.0 mmhos/cm	100 to 175 ppm N (0.7 to 1.2 EC)	Facultative Short Day

## Crop Scheduling

Container Size	Plugs/Pot	Crop Time	Season	PGR
4"/4.5"/Quart/10 cm	1 (ppp)	8-9 (weeks)	Spring	-
4"/4.5"/Quart/10 cm	1 (ppp)	6-7 (weeks)	Summer	-
4"/4.5"/Quart/10 cm	1 (ppp)	8-9 (weeks)	Autumn	-
4"/4.5"/Quart/10 cm	1 (ppp)	9-10 (weeks)	Winter	-

## Fertiliser Notation

Reduce nitrogen (N) in the fertilizer mix at the bud initiation stage until flowering for better plant control.

## Common Problems

Gerbera is very sensitive to Thrips. Zero tolerance is recommended. Also watch for Whiteflies, Leaf Miners, Spider Mites and other insects. It is recommended to start spraying against insects right after transplanting.

## Finishing Key Tips

ColorBloom needs no or less PGR compared to Revolution. Be careful with the use of PGR; if necessary, use daminozide 1,000 to 2,500 spray. Stop use after seeing the first flower buds. Use quart/4 to 4.5-in./11 to 12-cm pots. Fill pots all the way to a uniform soil level. When transplanting, do not plant too deep, as this may result in Crown Rot. Space plants when leaves are touching, generally around 5 weeks after transplanting.

NOTE: Growers should use the information presented here as guidelines only. PanAmerican Seed recommends that growers conduct a trial of products under their own conditions. Crop times will vary depending on the climate, location, time of year, and greenhouse environmental conditions. It is the responsibility of the grower to confirm the treatment is available in their region as well as read and follow all the current label directions relating to the products. Nothing herein shall be deemed a warranty or guaranty by PanAmerican Seed of any products listed herein. PanAmerican Seed's terms and conditions of sale shall apply to all products listed herein.

## Variety Pictures



Bicolor Orange  
Yellow



Bicolor Red  
White



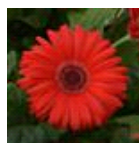
Cherry with  
Light Eye



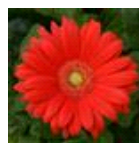
Deep Orange  
with Dark Eye



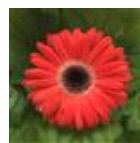
Deep Rose with  
Light Eye



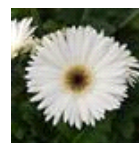
Red with Dark  
Eye



Red with Light  
Eye



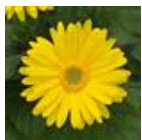
Watermelon  
with Dark Eye



White with Dark  
Eye



Yellow with  
Dark Eye



Yellow with  
Light Eye



Mixture



PanAmerican Seed Co.  
622 Town Road, West Chicago, Illinois, USA, 60185  
+1 800-231-7065 [PanAmSeed.com](http://PanAmSeed.com)

™ denotes a trademark of and ® denotes a registered trademark of Ball Horticultural Company in the US. It may also be registered in other countries.  
©2024 Ball Horticultural Company