

## ColorGrass® Juncus Javelin

(*Juncus pallidus*)

Annuals Culture (revised 02/24/20)

**Plug crop time:** 5 to 6 weeks

**Transplant to finish:** 5 to 6 weeks

Developed from unique genetics and available only from PanAmerican Seed, Javelin makes a dramatic “thriller” for mixed containers. Can grow up to 5 ft./1.5 m tall in gardens/landscapes. Rugged, upright plant can grow in standing water, but also handles heat/drought. Provides great Winter interest, maintaining upright, stiff, straw-colour foliage.

### General Information

Exposure	Bloom Season	Height	Spread	Spacing
Sun	-	48 in. (122 cm)	18-20 in. (46-51 cm)	18-22 in. (46-56 cm)

### Germination

Seed Form	Recommended Plug Size	Seeds/Cell	Plug Crop Weeks	Days from 50% to maximum germination	Initial Media pH/EC (1:2)	Cover Seed
MPL	288	1	5-6	5-6	5.5-6.2 pH 0.75 mmhos/cm	No

### Plug Production

	Stage 1	Stage 2	Stage 3	Stage 4
<b>Moisture</b>	Level 4	Level 3-4	Level 2-3	Level 2-3
<b>Temperature</b>	71-76°F (22-24°C)	64-70°F (18-21°C)	64-68°F (18-20°C)	64-66°F (18-19°C)
<b>Light</b>	Light	1,000-2,500 f.c. (10,800-26,900 Lux)	1,000-2,500 f.c. (10,800-26,900 Lux)	2,500-5,000 f.c. (26,900-53,800 Lux)
<b>Fertiliser</b>		Less than 100 ppm N (Less than 0.7 EC)	100 to 175 ppm N (0.7 to 1.2 EC)	100 to 175 ppm N (0.7 to 1.2 EC)

### Fertiliser Notation

Use a nitrate-based fertilizer with low phosphorus.

### Propagation Key Tips

To prevent leaf bending, a Bonzi 30 ppm spray can be used.

### Growing on to Finish

Growing on Temperature	Target Media pH/EC (1:2)	Fertiliser	Daylength
<b>(day)</b> 62-74°F (17-23°C) <b>(night)</b> 59-64°F (15-18°C)	5.5-6.2 pH 1.2-1.5 mmhos/cm	175 to 225 ppm N (1.2 to 1.5 EC)	Day Neutral

### Crop Scheduling

Container Size	Plugs/Pot	Crop Time	Season	PGR
306 Pack/1801	1 (ppp)	5-6 (weeks)	Spring	-
4"/4.5"/Quart/10 cm	1 (ppp)	5-6 (weeks)	Spring	-
5"/6"/1 Gallon/15 cm	1-3 (ppp)	6-7 (weeks)	Spring	-

## Fertiliser Notation

Use a nitrate-based fertilizer with low phosphorus; avoid using excessive ammonia, nitrogen-based fertilizer and overfeeding, as these will result in less upright plants.

## Common Problems

Planting the plug too deep.

## Finishing Key Tips

To prevent leaf bending, Bonzi 30 ppm spray can be used.

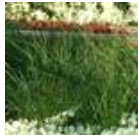
NOTE: Growers should use the information presented here as guidelines only. PanAmerican Seed recommends that growers conduct a trial of products under their own conditions. Crop times will vary depending on the climate, location, time of year, and greenhouse environmental conditions. It is the responsibility of the grower to confirm the treatment is available in their region as well as read and follow all the current label directions relating to the products. Nothing herein shall be deemed a warranty or guaranty by PanAmerican Seed of any products listed herein. PanAmerican Seed's terms and conditions of sale shall apply to all products listed herein.

## Variety Pictures

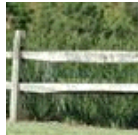
---



Javelin



Javelin



Javelin



PanAmerican Seed Co.  
622 Town Road, West Chicago, Illinois, USA, 60185  
+1 800-231-7065 [PanAmSeed.com](http://PanAmSeed.com)

™ denotes a trademark of and © denotes a registered trademark of Ball Horticultural Company in the US. It may also be registered in other countries.  
©2024 Ball Horticultural Company