

## Primula Primlet® Series

(*Primula acaulis*)

Annuals Culture (revised 11/17/21)

**Plug crop time:** 5 to 6 weeks

**Transplant to finish:** 15 to 17 weeks

- Clusters of scented blooms look like mini-rose bouquets.
- Works well in solo planters and small mixed combinations for late Winter and early Spring programs.
- Extended shelf life, long-lasting as an indoor house plant.
- Requires no special culture on the bench.

### General Information

Exposure	Bloom Season	Height	Spread	Spacing
Sun	Early Spring, Winter	5-6 in. (13-15 cm)	5-7 in. (13-18 cm)	5-9 in. (13-23 cm)

### Germination

Seed Form	Recommended Plug Size	Seeds/Cell	Plug Crop Weeks	Days from 50% to maximum germination	Initial Media pH/EC (1:2)	Cover Seed
RAW	288	1	5-6	7-10	5.5-5.8 pH 0.75 mmhos/cm	Light cover

### Plug Production

	Stage 1	Stage 2	Stage 3	Stage 4
<b>Moisture</b>	Level 4-5	Level 3-4	Level 3-4	Level 3-4
<b>Temperature</b>	64-68°F (18-20°C)	60-62°F (16-17°C)	60-62°F (16-17°C)	60-62°F (16-17°C)
<b>Light</b>	Optional	500-1,500 f.c. (5,400-16,100 Lux)	2,000-2,500 f.c. (21,500-26,900 Lux)	2,000-2,500 f.c. (21,500-26,900 Lux)
<b>Fertiliser</b>		Less than 100 ppm N (Less than 0.7 EC)	100 to 175 ppm N (0.7 to 1.2 EC)	100 to 175 ppm N (0.7 to 1.2 EC)

### Propagation Key Tips

Avoid too high light levels (>3,000 f.c.) to prevent leaf damage.

### Growing on to Finish

Growing on Temperature	Target Media pH/EC (1:2)	Fertiliser	Daylength
(day) 55-60°F (13-16°C) (night) 50-55°F (10-13°C)	5.5-6.2 pH 1.0-1.2 mmhos/cm	100 to 175 ppm N (0.7 to 1.2 EC)	Facultative Long Day

### Crop Scheduling

Container Size	Plugs/Pot	Crop Time	Season	PGR
5"/6"/1 Gallon/15 cm	1 (ppp)	15-17 (weeks)	Autumn	daminozide 2,500-5,000 ppm Spray

### Fertiliser Notation

Start the plants with 20-10-20 at 200 ppm. When ready for cold treatment, change fertilizer to 15-0-15 at 50 ppm.

## Common Problems

Insect: Aphids, White flies, Fungus Gnats Disease: Botrytis on flowers, Pythium, Rhizoctonia

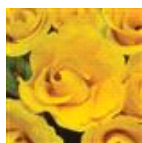
## Finishing Key Tips

Drop temperature after Week 5 (when plant has 10 established leaves) to 45 to 48°F (7 to 9°C) day and 35 to 45°F (2 to 7°C) night for bud initiation. After Week 11, go back up to growing temperatures for flower development and forcing. Plants can be held at 40 to 45°F (5 to 7°C) for later forcing. Growing-on time in weeks depends on how large a plant is required. A large plant requires a longer time at 60 to 65°F (16 to 18°C) nights. From bud visibility to first opening of flower is approximately 4 to 5 weeks, depending on temperature.

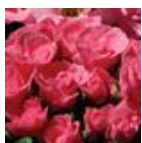
NOTE: Growers should use the information presented here as guidelines only. PanAmerican Seed recommends that growers conduct a trial of products under their own conditions. Crop times will vary depending on the climate, location, time of year, and greenhouse environmental conditions. It is the responsibility of the grower to confirm the treatment is available in their region as well as read and follow all the current label directions relating to the products. Nothing herein shall be deemed a warranty or guaranty by PanAmerican Seed of any products listed herein. PanAmerican Seed's terms and conditions of sale shall apply to all products listed herein.

## Variety Pictures

---



Golden Shades



Pink Shades



Purple



Rose



Rose with Edge



Scarlet Red  
Shades



Sunrise



White



Yellow



Mixture



PanAmerican Seed Co.  
622 Town Road, West Chicago, Illinois, USA, 60185  
+1 800-231-7065 [PanAmSeed.com](http://PanAmSeed.com)

™ denotes a trademark of and ® denotes a registered trademark of Ball Horticultural Company in the US. It may also be registered in other countries.  
©2026 Ball Horticultural Company