

Pepper KickStart™ F₁

(*Capsicum annuum*)

Vegetables Culture (revised 10/18/24)

- Upright plants produce high yields of bright red, medium-to-large, blocky bell peppers that are early to mature.
- Produces professional-quality fruit and performs well in-ground.
- Fruit are the perfect shape for stuffing or chopping and have a sweet flavour.

General Information

Exposure	Bloom Season	Height	Spread	Spacing
Sun	Spring, Late Spring, Summer, Late Summer	20-30 in. (51-76 cm)	12-18 in. (30-46 cm)	12-18 in. (30-46 cm)

Germination

Seed Form	Recommended Plug Size	Seeds/Cell	Plug Crop Weeks	Days from 50% to maximum germination	Initial Media pH/EC (1:2)	Cover Seed
RAW	288	1	5-6	5-7	5.8-6.2 pH	Light cover

Plug Production

	Stage 1	Stage 2	Stage 3	Stage 4
Moisture	Level 4	Level 3-4	Level 2-4	Level 2-4
Temperature	70-78°F (21-26°C)	68-72°F (20-22°C)	65-70°F (18-21°C)	62-67°F (17-19°C)
Light	Optional	1,000-2,500 f.c. (10,800-26,900 Lux)	1,000-2,500 f.c. (10,800-26,900 Lux)	2,500-5,000 f.c. (26,900-53,800 Lux)
Fertiliser	Less than 100 ppm N (Less than 0.7 EC)	Less than 100 ppm N (Less than 0.7 EC)	Less than 100 ppm N (Less than 0.7 EC)	100 to 175 ppm N (0.7 to 1.2 EC)

Fertiliser Notation

Peppers are very sensitive to high salts, particularly high ammonium, during germination. Keep ammonium levels to less than 10 ppm.

Propagation Key Tips

Height can be controlled by withholding fertiliser, avoiding overwatering, growing under high light conditions and using DIF when possible. If necessary, uniconazole (Sumagic) at the rate of 2.5 to 5 ppm can be applied at 2 weeks after sowing for height control. Repeat 2 weeks later if needed.

Growing on to Finish

Growing on Temperature	Target Media pH/EC (1:2)	Fertiliser	Daylength
(day) 68-80°F (20-27°C) (night) 65-70°F (18-21°C)	5.5-6.2 pH 1.0 mmhos/cm	100 to 175 ppm N (0.7 to 1.2 EC)	-

Days to Green Fruit

50-55

Days to Ripe Fruit

70-75

Crop Scheduling

Container Size	Plugs/Pot	Crop Time	Season	PGR
Cell Pack	1 (ppp)	4-6 (weeks)	Spring	-
4"/4.5"/Quart/10 cm	1 (ppp)	4-6 (weeks)	Spring	-
5"/6"/1 Gallon/15 cm	1 (ppp)	5-7 (weeks)	Spring	-

Finishing Key Tips

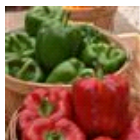
Performs well in-ground or in a large container, with support.

NOTE: Growers should use the information presented here as guidelines only. PanAmerican Seed recommends that growers conduct a trial of products under their own conditions. Crop times will vary depending on the climate, location, time of year, and greenhouse environmental conditions. It is the responsibility of the grower to confirm the treatment is available in their region as well as read and follow all the current label directions relating to the products. Nothing herein shall be deemed a warranty or guaranty by PanAmerican Seed of any products listed herein. PanAmerican Seed's terms and conditions of sale shall apply to all products listed herein.

Variety Pictures



KickStart



KickStart



PanAmerican Seed Co.
622 Town Road, West Chicago, Illinois, USA, 60185
+1 800-231-7065 PanAmSeed.com

™ denotes a trademark of and ® denotes a registered trademark of Ball Horticultural Company in the US. It may also be registered in other countries.
©2025 Ball Horticultural Company