

Pepper Pot-a-peño F₁

(*Capsicum annuum*)

Vegetables Culture (revised 10/18/24)

- Pot-a-peño's unique compact habit is perfect for patio containers.
- Early maturing means this will be one of the first peppers to fruit in the garden.
- Tons of jalapeño fruit grow under a dense canopy of small, dark green leaves.
- Harvest fruit green for a traditional spicy zip in any dish or allow to ripen to red for a sweet, spicy flavour.
- *All-America Selections Regional Winner, Great Lakes, West/Northwest.*

General Information

Exposure	Bloom Season	Height	Spread	Spacing
Sun	Summer	12-15 in. (30-38 cm)	18-20 in. (46-51 cm)	12-18 in. (30-46 cm)

Germination

Seed Form	Recommended Plug Size	Seeds/Cell	Plug Crop Weeks	Days from 50% to maximum germination	Initial Media pH/EC (1:2)	Cover Seed
RAW	288	1	5-6	5-7	5.8-6.2 pH 0.75 mmhos/cm	Light cover

Plug Production

	Stage 1	Stage 2	Stage 3	Stage 4
Moisture	Level 4	Level 3-4	Level 2-4	Level 2-4
Temperature	70-78°F (21-26°C)	68-72°F (20-22°C)	65-70°F (18-21°C)	62-67°F (17-19°C)
Light	Optional	1,000-2,500 f.c. (10,800-26,900 Lux)	1,000-2,500 f.c. (10,800-26,900 Lux)	2,500-5,000 f.c. (26,900-53,800 Lux)
Fertiliser	Less than 100 ppm N (Less than 0.7 EC)	Less than 100 ppm N (Less than 0.7 EC)	100 to 175 ppm N (0.7 to 1.2 EC)	100 to 175 ppm N (0.7 to 1.2 EC)

Fertiliser Notation

Pepper is very sensitive to high salts, particularly high ammonium, during germination. Keep ammonium levels to less than 10 ppm.

Propagation Key Tips

Height can be controlled by withholding fertiliser, avoiding overwatering, growing under high light conditions and using DIF when possible. If necessary, uniconazole (Sumagic) at the rate of 2.5 to 5 ppm can be applied at 2 weeks after sowing for height control. Repeat 2 weeks later if needed.

Growing on to Finish

Growing on Temperature	Target Media pH/EC (1:2)	Fertiliser	Daylength
(day) 68-80°F (20-27°C) (night) 65-70°F (18-21°C)	5.5-6.2 pH 1.0 mmhos/cm	100 to 175 ppm N (0.7 to 1.2 EC)	-

Days to Green Fruit

45-50

Days to Ripe Fruit

60-65

Crop Scheduling

Container Size	Plugs/Pot	Crop Time	Season	PGR
Cell Pack	1 (ppp)	4-6 (weeks)	Spring	-
4"/4.5"/Quart/10 cm	1 (ppp)	4-6 (weeks)	Spring	-
10" Pot or HB/3 Gallon/25 cm	1-3 (ppp)	8-10 (weeks)	Spring	-

Finishing Key Tips

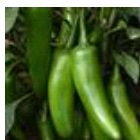
Performs well in-ground or in a medium container, with or without support. For hanging basket production, grow dry and provide high light, ideally outdoors.

NOTE: Growers should use the information presented here as guidelines only. PanAmerican Seed recommends that growers conduct a trial of products under their own conditions. Crop times will vary depending on the climate, location, time of year, and greenhouse environmental conditions. It is the responsibility of the grower to confirm the treatment is available in their region as well as read and follow all the current label directions relating to the products. Nothing herein shall be deemed a warranty or guaranty by PanAmerican Seed of any products listed herein. PanAmerican Seed's terms and conditions of sale shall apply to all products listed herein.

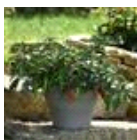
Variety Pictures



Pot-a-peño



Pot-a-peño



Pot-a-peño



PanAmerican Seed Co.
622 Town Road, West Chicago, Illinois, USA, 60185
+1 800-231-7065 PanAmSeed.com

™ denotes a trademark of and ® denotes a registered trademark of Ball Horticultural Company in the US. It may also be registered in other countries.
©2026 Ball Horticultural Company