

## Lisianthus Flare F<sub>1</sub> Series

(*Eustoma grandiflorum*)

Cut Flowers Culture (revised 10/03/24)

(Group 1.5-2)

Flare Lisianthus has medium, double flowers, with a top-flowering habit ideal for use in bouquets. The series has been bred and selected for reduced sensitivity to rosetting, resulting in less risk in production.

### General Information

Cultivation Type	Usage	Stem Length	Timing Group
Greenhouse, Tunnel	Focal, Secondary	36-45 in. (91-114 cm)	2

### Germination

Seed Form	Recommended Plug Size	Seeds/Cell	Plug Crop Weeks	Days from 50% to maximum germination	Initial Media pH/EC (1:2)	Cover Seed
PEL	406	1	8-10	8-12	5.8-6.2 pH 0.75 mmhos/cm	Light cover

### Plug Production

	Stage 1	Stage 2	Stage 3	Stage 4
<b>Moisture</b>	Level 4	Level 3-4	Level 3-4	Level 3
<b>Temperature</b>	68-72°F (20-22°C)	68-72°F (20-22°C)	65-68°F (18-20°C)	62-65°F (17-18°C)
<b>Light</b>		1,000-2,500 f.c. (10,800-26,900 Lux)	1,000-2,500 f.c. (10,800-26,900 Lux)	2,500-5,000 f.c. (26,900-53,800 Lux)
<b>Fertiliser</b>	Less than 100 ppm N (Less than 0.7 EC)	100 to 175 ppm N (0.7 to 1.2 EC)	100 to 175 ppm N (0.7 to 1.2 EC)	175 to 225 ppm N (1.2 to 1.5 EC)

### Propagation Key Tips

Avoid high media temperature (>72°F/22°C) beginning in Stage 2, as it can induce rosetting in the seedling, which will cause stunting after the plugs are transplanted. Also, it is very important to establish a preventative disease and insect control practice for lisianthus production.

### Growing on to Finish

Target Media pH/EC (1:2)	Fertiliser	Daylength
5.8-6.5 pH 1.5-2.0 mmhos/cm	100 to 175 ppm N (0.7 to 1.2 EC)	Facultative Long Day

### Daylength Notation

During Winter when daylength is shorter than 12 hours, supplemental light (incandescent or HID) can be used. Long-day (greater than 14 hours) or night interruption from 10 p.m. to 2 a.m. will accelerate flowering. HID light is preferred, as it increases flower quality and decreases crop time.

### Crop Scheduling

Cultivation Type	Support	Temperature	Density	Crop Time
Tunnel	Required	18-27°C/65-80°F (day) 13-18°C/55-65°F (night)	6-8 plants/ft² (65-86 plants/m²)	13-16 weeks
Greenhouse	Recommended	18-27°C/65-80°F (day) 13-18°C/55-65°F (night)	6-8 plants/ft² (65-86 plants/m²)	13-16 weeks

## Common Problems

Insects: Aphids, Leaf Miners, Thrips, Whiteflies Diseases: Botrytis, Fusarium, Pythium, Rhizoctonia, Tospo Viruses Other: Algae over plug tray surfaces, rosetting

## Finishing Key Tips

Full-sun plantings of cut flower lisianthus produce shorter stems than greenhouse-grown lisianthus. Flare is a series of F1 spray-type double-flowering lisianthus. They have a top-flowering habit, producing more flowers on top of each stem within a short flowering window, giving a bouquet effect. Flare series is Speed Group 2 (Mid/medium speed) for flowering speed. Crop time is dependent on time of year, temperature, daylength and light intensity, and also on supplemental lighting and greenhouse conditions.

## Harvest

Harvest when the first flower has fully opened.

## Post Harvest

Hydrate flowers with a floral hydration solution for one hour at room temperature. Store in a cooler at 2-5°C (36-41°F) in a commercial floral holding solution at the manufacturer's recommended rates.

## Vase Life

10-14 days

NOTE: Growers should use the information presented here as guidelines only. PanAmerican Seed recommends that growers conduct a trial of products under their own conditions. Crop times will vary depending on the climate, location, time of year, and greenhouse environmental conditions. It is the responsibility of the grower to confirm the treatment is available in their region as well as read and follow all the current label directions relating to the products. Nothing herein shall be deemed a warranty or guaranty by PanAmerican Seed of any products listed herein. PanAmerican Seed's terms and conditions of sale shall apply to all products listed herein.

## Variety Pictures

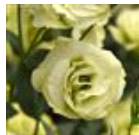
---



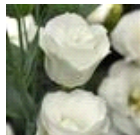
Deep Blue



Deep Rose



Jade



White



Yellow



PanAmerican Seed Co.  
622 Town Road, West Chicago, Illinois, USA, 60185  
+1 800-231-7065 [PanAmSeed.com](http://PanAmSeed.com)

™ denotes a trademark of and ® denotes a registered trademark of Ball Horticultural Company in the US. It may also be registered in other countries.  
©2025 Ball Horticultural Company