

## Gerbera Mega Revolution™ F<sub>1</sub> Series

(*Gerbera jamesonii*)

Potted Plants Culture (revised 11/08/23)

**Plug crop time:** 6 to 7 weeks

**Transplant to finish:** 8 to 10 weeks

- Produces manageable, larger-sized plants with very large flowers – beats competing series for colour range, bloom size and seed quality.
- Ideal for larger container programs.
- Supplied with industry-leading seed quality.

### General Information

Exposure	Bloom Season	Height	Spread	Spacing
Partial Sun	Early Spring, Spring, Late Spring, Summer, Late Summer, Autumn, Winter	6-10 in. (15-25 cm)	12-14 in. (30-36 cm)	12-14 in. (30-36 cm)

### Germination

Seed Form	Recommended Plug Size	Seeds/Cell	Plug Crop Weeks	Days from 50% to maximum germination	Initial Media pH/EC (1:2)	Cover Seed
COT	128	1	6-7	4-7	5.5-5.8 pH 0.5-0.7 mmhos/cm	Light cover

### Plug Production

	Stage 1	Stage 2	Stage 3	Stage 4
<b>Moisture</b>	Level 5	Level 4	Level 3	Level 3
<b>Temperature</b>	70-74°F (21-23°C)	68-70°F (20-21°C)	68-70°F (20-21°C)	66-68°F (19-20°C)
<b>Light</b>	Optional	6-8 mol·m <sup>-2</sup> ·d <sup>-1</sup> 2,000-2,500 f.c. (21,500-26,900 Lux)	6-8 mol·m <sup>-2</sup> ·d <sup>-1</sup> 2,000-2,500 f.c. (21,500-26,900 Lux)	6-8 mol·m <sup>-2</sup> ·d <sup>-1</sup> 2,000-2,500 f.c. (21,500-26,900 Lux)
<b>Fertiliser</b>	Less than 100 ppm N (Less than 0.7 EC)	Less than 100 ppm N (Less than 0.7 EC)	100 to 175 ppm N (0.7 to 1.2 EC)	100 to 175 ppm N (0.7 to 1.2 EC)

### Propagation Key Tips

Don't water with cold water. Use water with a temperature at least 60°F/16°C or higher. Watering with cold water will result in deformed leaves and will disturb plant growth. Do not pot too deeply when transplanting, as this may result in Crown Rot. Space plants when the leaves of the plants are touching each other, generally 5 to 6 weeks after transplanting.

### Growing on to Finish

Growing on Temperature	Target Media pH/EC (1:2)	Fertiliser	Daylength
(day) 66-68°F (19-20°C) (night) 62-66°F (17-19°C)	5.5-6.0 pH 0.5-1.0 mmhos/cm	100 to 175 ppm N (0.7 to 1.2 EC)	Facultative Short Day

## Crop Scheduling

Container Size	Plugs/Pot	Crop Time	Season	PGR
5"/6"/1 Gallon/15 cm	1 (ppp)	10-11 (weeks)	Spring	daminozide 1,000-2,500 ppm Spray
5"/6"/1 Gallon/15 cm	1 (ppp)	8-9 (weeks)	Summer	daminozide 1,000-2,500 ppm Spray
5"/6"/1 Gallon/15 cm	1 (ppp)	10-11 (weeks)	Autumn	daminozide 1,000-2,500 ppm Spray
5"/6"/1 Gallon/15 cm	1 (ppp)	11-12 (weeks)	Autumn	daminozide 1,000-2,500 ppm Spray

## Fertiliser Notation

Reduce nitrogen (N) in fertilizer mix at bud initiation stage until flowering for better plant control.

## Common Problems

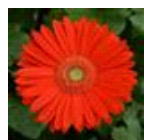
Gerbera is very sensitive to Thrips. Zero tolerance is recommended. Also watch for Whiteflies, Leaf Miners, Spider Mites and other insects. It is recommended to start spraying against insects right after transplant.

## Finishing Key Tips

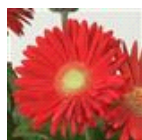
Use 6-in. (15 cm) pots or larger. Fill pots all the way to a uniform soil level. When transplanting, do not plant too deep, as this may result in Crown Rot. Space plants when leaves are touching, generally 5 to 6 weeks after transplanting. To reduce stretching, use B-Nine/Alar (daminozide) at 1,000 to 2,500 ppm 1 to 2 times with an interval of 9 to 10 days. Stop use after seeing the first flower buds.

NOTE: Growers should use the information presented here as guidelines only. PanAmerican Seed recommends that growers conduct a trial of products under their own conditions. Crop times will vary depending on the climate, location, time of year, and greenhouse environmental conditions. It is the responsibility of the grower to confirm the treatment is available in their region as well as read and follow all the current label directions relating to the products. Nothing herein shall be deemed a warranty or guaranty by PanAmerican Seed of any products listed herein. PanAmerican Seed's terms and conditions of sale shall apply to all products listed herein.

## Variety Pictures



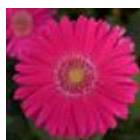
Bright Orange  
with Light Eye



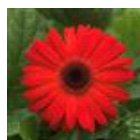
Bright Red



Bright Rose with  
Dark Eye



Deep Rose with  
Light Eye



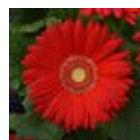
Orange with  
Dark Eye



Orange with  
Light Eye



Rose with Light  
Eye



Scarlet Red  
with Light Eye



Watermelon



White with Light  
Eye



Yellow with  
Dark Eye



Select Mixture



PanAmerican Seed Co.  
622 Town Road, West Chicago, Illinois, USA, 60185  
+1 800-231-7065 [PanAmSeed.com](http://PanAmSeed.com)

™ denotes a trademark of and ® denotes a registered trademark of Ball Horticultural Company in the US. It may also be registered in other countries.  
©2025 Ball Horticultural Company