

## Herb (Dill) Fernleaf

(*Anethum graveolens*)

Vegetables Culture (revised 01/19/21)

- Perfect for patio planters – dwarf, compact plants don't need staking and won't topple over.
- Can also be grown in-ground and used for traditional culinary purposes.
- Late flowering allows for a long harvest season and extended ornamental period.
- *All-America Selections National Winner.*

### General Information

Exposure	Bloom Season	Height	Spread	Spacing
Sun	Summer, Late Summer	12-15 in. (30-38 cm)	10-12 in. (25-30 cm)	10-14 in. (25-36 cm)

### Germination

Seed Form	Recommended Plug Size	Seeds/Cell	Plug Crop Weeks	Days from 50% to maximum germination	Initial Media pH/EC (1:2)	Cover Seed
RAW	288	1-3	4-5	4-7	5.5-5.8 pH 0.75 mmhos/cm	No

### Plug Production

	Stage 1	Stage 2	Stage 3	Stage 4
<b>Moisture</b>	Level 4	Level 3-4	Level 2-3	Level 2-3
<b>Temperature</b>	68-72°F (20-22°C)	68-72°F (20-22°C)	65-68°F (18-20°C)	62-65°F (17-18°C)
<b>Light</b>	Light	500-1,000 f.c. (5,400-10,800 Lux)	1,000-1,500 f.c. (10,800-16,100 Lux)	1,500-2,000 f.c. (16,100-21,500 Lux)
<b>Fertiliser</b>	Less than 100 ppm N (Less than 0.7 EC)	Less than 100 ppm N (Less than 0.7 EC)	100 to 175 ppm N (0.7 to 1.2 EC)	Less than 100 ppm N (Less than 0.7 EC)

### Propagation Key Tips

Can be directly sown into final container.

### Growing on to Finish

Growing on Temperature	Target Media pH/EC (1:2)	Fertiliser	Daylength
(day) 60-65°F (16-18°C) (night) 55-60°F (13-16°C)	5.5-6.2 pH 1.0 mmhos/cm	100 to 175 ppm N (0.7 to 1.2 EC)	-

### Crop Scheduling

Container Size	Plugs/Pot	Crop Time	Season	PGR
Cell Pack	1 (ppp)	3-4 (weeks)	Spring	-
4"/4.5"/Quart/10 cm	1 (ppp)	3-4 (weeks)	Spring	-
5"/6"/1 Gallon/15 cm	1-3 (ppp)	4-5 (weeks)	Spring	-

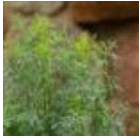
## Finishing Key Tips

Seed can be directly sown into finish containers.

NOTE: Growers should use the information presented here as guidelines only. PanAmerican Seed recommends that growers conduct a trial of products under their own conditions. Crop times will vary depending on the climate, location, time of year, and greenhouse environmental conditions. It is the responsibility of the grower to confirm the treatment is available in their region as well as read and follow all the current label directions relating to the products. Nothing herein shall be deemed a warranty or guaranty by PanAmerican Seed of any products listed herein. PanAmerican Seed's terms and conditions of sale shall apply to all products listed herein.

## Variety Pictures

---



Fernleaf



Fernleaf



PanAmerican Seed Co.  
622 Town Road, West Chicago, Illinois, USA, 60185  
+1 800-231-7065 [PanAmSeed.com](http://PanAmSeed.com)

™ denotes a trademark of and ® denotes a registered trademark of Ball Horticultural Company in the US. It may also be registered in other countries.  
©2025 Ball Horticultural Company