

## Petunia Sophistica® F<sub>1</sub> Series

(*Petunia x hybrida*)

Annuals Culture (revised 02/24/20)

The designer Sophistica and Debonair collections combine beautiful flowers in special one-of-a-kind colours with professional seed quality. These premium petunias can command a higher price point at retail and open the door to decorator opportunities.

**Plug crop time:** 4 to 5 weeks

**Transplant to finish:** 5 to 6 weeks

- Abundant grandiflora blooms.
- Plants are well-matched for timing for easier scheduling and shipping.
- Mounded, upright habit is ideal for premium pots and larger containers.

### General Information

Exposure	Bloom Season	Height	Spread	Spacing
Sun	Spring, Late Spring, Summer	10-15 in. (25-38 cm)	10-12 in. (25-30 cm)	10-14 in. (25-36 cm)

### Germination

Seed Form	Recommended Plug Size	Seeds/Cell	Plug Crop Weeks	Days to Germinate	Initial Media pH/EC	Cover Seed
PEL, RAW	288	1	4-5	3-5	5.5-5.8 pH 0.75-1.0 mmhos/cm	No

### Plug Production

	Stage 1	Stage 2	Stage 3	Stage 4
<b>Moisture</b>	Level 4-5	Level 3-4	Level 2-4	Level 2-4
<b>Temperature</b>	72-76°F (22-24°C)	68-75°F (20-24°C)	65-70°F (18-21°C)	62-65°F (17-18°C)
<b>Light</b>	Light	1,000-2,500 f.c. (10,800-26,900 Lux)	2,500-4,000 f.c. (26,900-43,100 Lux)	2,500-5,000 f.c. (26,900-53,800 Lux)
<b>Fertilizer</b>		Less than 100 ppm N - Less than 0.7 EC	100 to 175 ppm N - 0.7 to 1.2 EC	100 to 175 ppm N - 0.7 to 1.2 EC
<b>PGR</b>			daminozide/2,500-5,000 ppm/Spray	daminozide/2,500-5,000 ppm/Spray

### Propagation Key Tips

PGR options include paclobutrazol or flurprimidol.

### Growing on to Finish

Growing on Temperature	Target Media pH/EC	Fertilizer	Daylength
(day) 62-70°F (17-21°C) (night) 55-65°F (13-18°C)	5.5-6.2 pH 1.2-1.5 mmhos/cm	100 to 175 ppm N - 0.7 to 1.2 EC	Facultative Long Day

### Daylength Notation

Can flower successfully at 10-hour daylengths. Crop time is 3 to 6 days faster under longer days.

## Crop Scheduling

---

Container Size	Plugs/Pot	Crop Time	Season	PGR
4"/4.5"/Quart	1 (ppp)	5-6 (weeks)	Spring	paclobutrazol 2-3 ppm Drench
10" Pot or HB/3 Gallon	3 (ppp)	6-7 (weeks)	Spring	paclobutrazol 2-3 ppm Drench
4"/4.5"/Quart	1 (ppp)	4-5 (weeks)	Summer	paclobutrazol 2-3 ppm Drench
10" Pot or HB/3 Gallon	3 (ppp)	5-6 (weeks)	Summer	paclobutrazol 2-3 ppm Drench

### Chemical Sensitivity

Avoid using daminozide on Lime Bicolor and Blackberry, as this may impact flower colour.

### Common Problems

Insects: Thrips, Aphids, Fungus Gnats, Shore Flies Diseases: Botrytis, Rhizoctonia, Pythium

### Finishing Key Tips

Avoid using daminozide on Lime Bicolor and Blackberry, as this may impact flower colour. Options include paclobutrazol or flurprimidol.

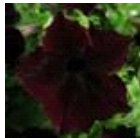
NOTE: Growers should use the information presented here as guidelines only. PanAmerican Seed recommends that growers conduct a trial of products under their own conditions. Crop times will vary depending on the climate, location, time of year, and greenhouse environmental conditions. It is the responsibility of the grower to confirm the treatment is available in their region as well as read and follow all the current label directions relating to the products. Nothing herein shall be deemed a warranty or guaranty by PanAmerican Seed of any products listed herein. PanAmerican Seed's terms and conditions of sale shall apply to all products listed herein.

## Variety Pictures

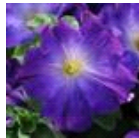
---



Antique Shades



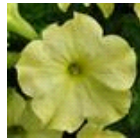
Blackberry



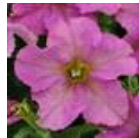
Blue Morn



Lime Bicolor



Lime Green



Twilight

PanAmericanSeed™

PanAmerican Seed Co.  
622 Town Road, West Chicago, Illinois, USA, 60185-2698  
630 231-1400 Fax: 630 231-3609 PanAmSeed.com

™ denotes a trademark of and © denotes a registered trademark of Ball Horticultural Company in the US. It may also be registered in other countries.  
©2020 Ball Horticultural Company