

Petunia (Spreading) Easy Wave[®] F₁ Series

Annuals Culture (revised 03/01/19)

(*Petunia x hybrida*)

Bold and creative!

You'll always stand out in the petunia market with Easy Wave. Bring in a wide array of decorator colours. Put the huge versatility to work – they're perfect for solo and mixed planters and baskets, gardens and landscapes. Best of all, these all-season salesmakers deliver customer-pleasing performance all Summer.

Plug crop time: 4 to 6 weeks

Transplant to finish: Spring 6 to 7 weeks, Summer 4 to 5 weeks

- Exceptional uniformity means simplified production, maximized plug yields and the ability to meet every ship date for every colour. Lets you grow specialty mixes, too!
- More mounded with more controlled spread than Wave[®] varieties.
- Recommended in Wave branded packaging: 6-in./15-cm pots, premium quarts and gallons, 306 premium packs with handle, hanging baskets.

General Information

Exposure	Bloom Season	Height	Spread	Spacing
Sun	Spring, Late Spring, Summer, Late Summer	6-12 in. (15-30 cm)	30-39 in. (76-99 cm)	10-15 in. (25-38 cm)

Germination

Seed Form	Recommended Plug Size	Seeds/Cell	Plug Crop Weeks	Days to Germinate	Initial Media pH/EC	Cover Seed
PEL	288	1	4-6	3-5	5.5-6.0 pH 0.75 mmhos/cm	No
	128	1	5-7			

Plug Production

	Stage 1	Stage 2	Stage 3	Stage 4
Moisture	Level 4-5	Level 3-4	Level 2-4	Level 2-4
Temperature	72-75°F (22-24°C)	68-75°F (20-24°C)	65-70°F (18-21°C)	60-65°F (16-18°C)
Light	Optional	6 mol·m ⁻² ·d ⁻¹ 1,000-2,500 f.c. (10,800-26,900 Lux)	8-12 mol·m ⁻² ·d ⁻¹ 2,500-4,000 f.c. (26,900-43,100 Lux)	8-15 mol·m ⁻² ·d ⁻¹ 2,500-5,000 f.c. (26,900-53,800 Lux)
Fertilizer		Less than 100 ppm N - Less than 0.7 EC	100 to 175 ppm N - 0.7 to 1.2 EC	100 to 175 ppm N - 0.7 to 1.2 EC
PGR			daminozide/2,500-5,000 ppm/Spray	daminozide/2,500-5,000 ppm/Spray

Growing on to Finish

Growing on Temperature	Target Media pH/EC	Fertilizer	Daylength
(day) 61-75°F (16-24°C) (night) 57-65°F (14-18°C)	5.5-6.2 pH 1.5-2.0 mmhos/cm	225 to 300 ppm N - 1.5 to 2.0 EC	Facultative Long Day

Daylength Notation

Minimum Daylength Requirement By Variety:

9.5 Lavender Sky Blue

10 hours: Berry Velour, Pink Passion, Burgundy Star, Coral Reef, Neon Rose, Rosy Dawn, Silver, Violet Improved, White, Yellow

10.5 hours: Blue, Burgundy Velour

11 hours: Pink, Plum Vein, Red Improved, Red Velour

Crop Scheduling

Container Size	Plugs/Pot	Crop Time	Season	PGR
306 Pack	1 (ppp)	6-7 (weeks)	Spring	paclobutrazol 3-5 ppm Drench
4"/4.5"/Quart	1 (ppp)	6-7 (weeks)	Spring	paclobutrazol 3-5 ppm Drench
10" Pot or HB/3 Gallon	3-4 (ppp)	8-9 (weeks)	Spring	paclobutrazol 3-5 ppm Drench
306 Pack	1 (ppp)	4-5 (weeks)	Summer	paclobutrazol 3-5 ppm Drench
4"/4.5"/Quart	1 (ppp)	4-5 (weeks)	Summer	paclobutrazol 3-5 ppm Drench
10" Pot or HB/3 Gallon	3-4 (ppp)	6-7 (weeks)	Summer	paclobutrazol 3-5 ppm Drench

Common Problems

Insects: Thrips, Aphids, Fungus Gnats, Shore Flies Diseases: Botrytis, Rhizoctonia, Pythium

Finishing Key Tips

Daminozide spray of 3,500 to 5,000 ppm 7 to 10 days after transplant promotes branching and controls early stretch. As an optional treatment, flurprimidol (Topflor) can be used in place of paclobutrazol at 2/3 the rate of paclobutrazol. Can be grown as low as 50°F (10°C). Crop timing is related to average temperature when grown under proper daylength. Plants will take longer to flower when grown in cooler conditions.

Recommended DLI range of 12 to 20 mol·m⁻²·d⁻¹. Burgundy Velour, Plum Vein and Red Velour are more vigorous within the Easy Wave group. They can take higher rates of paclobutrazol, 1 to 2 ppm more. Cold-Durable Varieties: Berry Velour, Blue, Burgundy Star, Burgundy Velour, Coral Reef, Lavender Sky Blue, Neon Rose, Pink Passion, Pink, Plum Vein, Red Improved, Red Velour, Silver, Violet Improved, White, Yellow Cold-Sensitive Variety: Rosy Dawn

NOTE: Growers should use the information presented here as guidelines only. PanAmerican Seed recommends that growers conduct a trial of products under their own conditions. Crop times will vary depending on the climate, location, time of year, and greenhouse environmental conditions. It is the responsibility of the grower to confirm the treatment is available in their region as well as read and follow all the current label directions relating to the products. Nothing herein shall be deemed a warranty or guaranty by PanAmerican Seed of any products listed herein. PanAmerican Seed's terms and conditions of sale shall apply to all products listed herein.

Variety Pictures



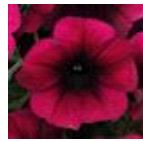
Berry Velour



Blue



Burgundy Star



Burgundy
Velour



Coral Reef



Lavender Sky
Blue



Neon Rose



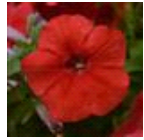
Pink



Pink Passion



Plum Vein



Red



Red Velour



Rosy Dawn



Silver



Violet



White



Yellow



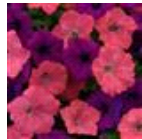
Beachcomber
Mixture



Formula
Mixture



Great Lakes
Mixture



Opposites
Attract Mixture



Plum Pudding
Mixture



South Beach
Mixture



Starfish Mixture



The Flag
Mixture

PanAmericanSeed™

PanAmerican Seed Co.
622 Town Road, West Chicago, Illinois, USA, 60185-2698
630 231-1400 Fax: 630 231-3609 PanAmSeed.com

™ denotes a trademark of and ® denotes a registered trademark of Ball Horticultural Company in the US. It may also be registered in other countries.
©2019 Ball Horticultural Company