

Petunia (Spreading) Tidal Wave® F₁ Series

Annuals Culture (revised 02/24/20)

(*Petunia x hybrida*)

Big, bold 3D colour!

Extend your season with this strong finisher – grown and marketed in 8-in./20-cm pots and baskets, Tidal Wave is the “go-to” for pros and home gardeners looking for fresh, fast colour. Hedge, vine or impressive groundcover – Tidal Wave does it all! These fast-fill plants spread out across big spaces, and they crawl along and over walls and fences.

Plug crop time: 5 to 6 weeks

Transplant to finish: Spring 6 to 8 weeks, Summer 4 to 7 weeks

- Largest and most vigorous of the Wave petunia family, Tidal Wave plants super-size colour into big spaces.
- Excellent landscape performer with terrific recovery from rain. The plants resist lodging, so they won't fall open and expose a bare centre like other petunias can.
- Recommended in Wave branded packaging: 8-in./20-cm pots, hanging baskets.

Height, spread and spacing: Growth habit is based on how closely plants are placed – the closer the spacing, the taller the plants.

- Spaced a minimum of 12 in./30 cm apart, Tidal Wave petunias form a dense, mounded hedge, 16 to 22 in./41 to 56 cm tall.
- Grown in a restricted space with support, they grow an extra 2 to 3 ft./61 to 91 cm upward, like a vine.
- Spaced up to 24 in./61 cm apart in the garden, the plants make a floriferous groundcover, spreading up to 5 ft./1.5 m across per plant.

General Information

Exposure	Bloom Season	Height	Spread	Spacing
Sun	Spring, Late Spring, Summer, Late Summer	16-22 in. (41-56 cm)	30-60 in. (76-152 cm)	12-24 in. (30-61 cm)

Germination

Seed Form	Recommended Plug Size	Seeds/Cell	Plug Crop Weeks	Days to Germinate	Initial Media pH/EC	Cover Seed
PEL	288 128	1 1	4-6 5-7	3-5	5.5-6.0 pH 0.75 mmhos/cm	No

Plug Production

	Stage 1	Stage 2	Stage 3	Stage 4
Moisture	Level 4-5	Level 3-4	Level 2-4	Level 2-4
Temperature	72-75°F (22-24°C)	68-75°F (20-24°C)	65-70°F (18-21°C)	60-65°F (16-18°C)
Light	Optional	6 mol·m ⁻² ·d ⁻¹ 1,000-2,500 f.c. (10,800-26,900 Lux)	8-12 mol·m ⁻² ·d ⁻¹ 2,500-4,000 f.c. (26,900-43,100 Lux)	8-15 mol·m ⁻² ·d ⁻¹ 2,500-5,000 f.c. (26,900-53,800 Lux)
Fertilizer		Less than 100 ppm N - Less than 0.7 EC	100 to 175 ppm N - 0.7 to 1.2 EC	100 to 175 ppm N - 0.7 to 1.2 EC
PGR			daminozide/2,500-5,000 ppm/Spray	daminozide/2,500-5,000 ppm/Spray

Growing on to Finish

Growing on Temperature	Target Media pH/EC	Fertilizer	Daylength
(day) 61-75°F (16-24°C) (night) 57-65°F (14-18°C)	5.5-6.2 pH 1.5-2.0 mmhos/cm	225 to 300 ppm N - 1.5 to 2.0 EC	Facultative Long Day

Daylength Notation

Minimum Daylength Requirement by Variety:
12 hours: Cherry, Hot Pink, Purple, Red Velour, Silver

Crop Scheduling

Container Size	Plugs/Pot	Crop Time	Season	PGR
5"/6"/1 Gallon	1-3 (ppp)	6-8 (weeks)	Spring	paclobutrazol 5-8 ppm Drench
8"/2 Gallon	1-3 (ppp)	6-8 (weeks)	Spring	paclobutrazol 5-8 ppm Drench
5"/6"/1 Gallon	1-3 (ppp)	4-7 (weeks)	Summer	paclobutrazol 5-8 ppm Drench
8"/2 Gallon	1-3 (ppp)	4-7 (weeks)	Summer	paclobutrazol 5-8 ppm Drench

Common Problems

Insects: Thrips, Aphids, Fungus Gnats, Shore Flies Diseases: Botrytis, Rhizoctonia, Pythium

Finishing Key Tips

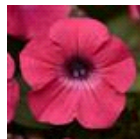
Daminozide spray of 3,500 to 5,000 ppm 7 to 10 days after transplant promotes branching and controls early stretch. An alternative to paclobutrazol drench, flurprimidol (Topflor) can be used at 2/3 the rate of paclobutrazol. Can be grown as low as 50°F (10°C). Crop timing is related to average temperature when grown under proper daylength. Plants will take longer to flower when grown in cooler conditions. Recommended DLI range of 12 to 20 mol·m⁻²·d⁻¹. Cold-Durable Varieties: Red Velour, Silver

NOTE: Growers should use the information presented here as guidelines only. PanAmerican Seed recommends that growers conduct a trial of products under their own conditions. Crop times will vary depending on the climate, location, time of year, and greenhouse environmental conditions. It is the responsibility of the grower to confirm the treatment is available in their region as well as read and follow all the current label directions relating to the products. Nothing herein shall be deemed a warranty or guaranty by PanAmerican Seed of any products listed herein. PanAmerican Seed's terms and conditions of sale shall apply to all products listed herein.

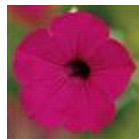
Variety Pictures



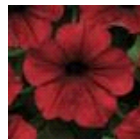
Cherry



Hot Pink



Purple



Red Velour



Silver

PanAmericanSeed™

PanAmerican Seed Co.
622 Town Road, West Chicago, Illinois, USA, 60185-2698
630 231-1400 Fax: 630 231-3609 PanAmSeed.com

™ denotes a trademark of and © denotes a registered trademark of Ball Horticultural Company in the US. It may also be registered in other countries.
©2020 Ball Horticultural Company