

## Impatiens Super Elfin® XP F<sub>1</sub> Series

(*Impatiens walleriana*)

Annuals Culture (revised 07/22/20)

### XP = Precise, programmable, predictable!

Count on Super Elfin XP varieties for a tight bloom window, prolific flowering, exceptionally uniform habit and strong plant vigour.

The Super Elfin XP series delivers a 5 to 7-day flowering window across all colours so all plants ship at the same time and you always meet market dates.

**Plug crop time:** 4 to 5 weeks

**Transplant to finish:** 3 to 4 weeks

- Bring in the best habit, vigour and timing uniformity across a broad colour range with Super Elfin XP.
- The broad colour range lets you mix and match any Super Elfin XP variety to achieve the most uniform impatiens crop.

## General Information

Exposure	Bloom Season	Height	Spread	Spacing
Shade, Sun	Spring, Late Spring, Summer, Late Summer	8-12 in. (20-30 cm)	12-14 in. (30-36 cm)	8-10 in. (20-25 cm)

## Germination

Seed Form	Recommended Plug Size	Seeds/Cell	Plug Crop Weeks	Days to Germinate	Initial Media pH/EC	Cover Seed
RAW	288	1	4-5	3-5	6.0-6.2 pH 0.5-0.75 mmhos/cm	No

## Plug Production

	Stage 1	Stage 2	Stage 3	Stage 4
<b>Moisture</b>	Level 4-5	Level 2-4	Level 2-3	Level 2-3
<b>Temperature</b>	68-77°F (20-25°C)	64-73°F (18-23°C)	68-70°F (20-21°C)	62-65°F (17-18°C)
<b>Light</b>	Light	450-700 f.c. (4,800-7,500 Lux)	450-700 f.c. (4,800-7,500 Lux)	450-700 f.c. (4,800-7,500 Lux)
<b>Fertilizer</b>		Less than 100 ppm N - Less than 0.7 EC	Less than 100 ppm N - Less than 0.7 EC	Less than 100 ppm N - Less than 0.7 EC

## Propagation Key Tips

Do not cover seed.

## Growing on to Finish

Growing on Temperature	Target Media pH/EC	Fertilizer	Daylength
<b>(day)</b> 70-75°F (21-24°C) <b>(night)</b> 62-68°F (17-20°C)	6.2-6.5 pH 0.75-1.0 mmhos/cm	Less than 100 ppm N - Less than 0.7 EC	Day Neutral

## Crop Scheduling

Container Size	Plugs/Pot	Crop Time	Season	PGR
Cell Pack	1 (ppp)	3-4 (weeks)	Spring	-
4"/4.5"/Quart	1 (ppp)	4-5 (weeks)	Spring	-
10" Pot or HB/3 Gallon	3-5 (ppp)	8-10 (weeks)	Spring	-

### Finishing Key Tips

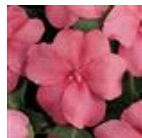
Impatiens will respond to daminozide, paclobutrazol and uniconazol. Monitoring of water and fertilization can help with controlling plant growth and vigour.

NOTE: Growers should use the information presented here as guidelines only. PanAmerican Seed recommends that growers conduct a trial of products under their own conditions. Crop times will vary depending on the climate, location, time of year, and greenhouse environmental conditions. It is the responsibility of the grower to confirm the treatment is available in their region as well as read and follow all the current label directions relating to the products. Nothing herein shall be deemed a warranty or guaranty by PanAmerican Seed of any products listed herein. PanAmerican Seed's terms and conditions of sale shall apply to all products listed herein.

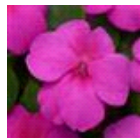
## Variety Pictures



Blue Pearl



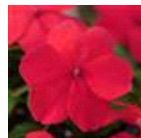
Coral



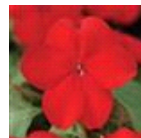
Lilac



Pink



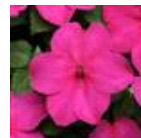
Punch



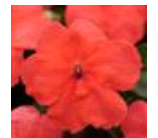
Red



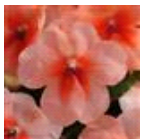
Red Starburst



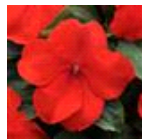
Rose



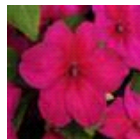
Salmon



Salmon Splash



Scarlet



Violet



Violet Starburst



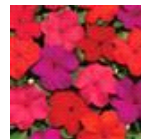
White



Clear Mixture



Formula Mixture



Hot Mixture

PanAmericanSeed™

PanAmerican Seed Co.  
622 Town Road, West Chicago, Illinois, USA, 60185-2698  
630 231-1400 Fax: 630 231-3609 PanAmSeed.com

™ denotes a trademark of and © denotes a registered trademark of Ball Horticultural Company in the US. It may also be registered in other countries.  
©2020 Ball Horticultural Company