

Alyssum Snow Crystals

(*Lobularia maritima*)

Annuals Culture (revised 01/10/18)

Plug crop time: 4 weeks

Transplant to finish: 4 to 6 weeks

- Large, pure white, scented flowers have outstanding sales appeal.
- Tetraploid genetics of Snow Crystals add heat tolerance and vigour.

General Information

Exposure	Bloom Season	Height	Spread	Spacing
Sun	Early Spring, Spring	6-10 in. (15-25 cm)	12-14 in. (30-36 cm)	12-16 in. (30-41 cm)

Germination

Seed Form	Recommended Plug Size	Seeds/Cell	Plug Crop Weeks	Days to Germinate	Initial Media pH/EC	Cover Seed
RAW	288	5-6	4	3-4	5.8-6.2 pH 0.75 mmhos/cm	Light cover

Plug Production

	Stage 1	Stage 2	Stage 3	Stage 4
Moisture	Level 4	Level 3	Level 3	Level 2
Temperature	70-72°F (21-22°C)	65-75°F (18-24°C)	65-75°F (18-24°C)	60-70°F (16-21°C)
Light	Optional	1,000-2,500 f.c. (10,800-26,900 Lux)	1,000-2,500 f.c. (10,800-26,900 Lux)	2,500-5,000 f.c. (26,900-53,800 Lux)
Fertilizer	Less than 100 ppm N - Less than 0.7 EC		100 to 175 ppm N - 0.7 to 1.2 EC	100 to 175 ppm N - 0.7 to 1.2 EC

Propagation Key Tips

Multi-sowing is recommended with 5 to 6 seeds per plug cell. PGRs are not generally required for plug propagation. It is recommended to incorporate a Downy Mildew preventative fungicide program for alyssum plug propagation.

Growing on to Finish

Growing on Temperature	Target Media pH/EC	Fertilizer	Daylength
(day) 60-75°F (16-24°C) (night) 55-60°F (13-16°C)	5.8-6.2 pH 1.5-2.0 mmhos/cm	175 to 225 ppm N - 1.2 to 1.5 EC	Day Neutral

Crop Scheduling

Container Size	Plugs/Pot	Crop Time	Season	PGR
306 Pack	1 (ppp)	6-7 (weeks)	Late Spring	-
4"/4.5"/Quart	1 (ppp)	6-7 (weeks)	Late Spring	-

Fertilizer Notation

Starting 1 week after transplant, apply fertilizer at rate 3 (175 to 225 ppm N/1.2 to 1.5 mS/cm) using a predominantly nitrate-based fertilizer with low phosphorus. If needed, alternate with a balanced ammonium and nitrate-based fertilizer to encourage growth and balance the media pH. Maintain the media EC at 1.50 to 2.00 mS/cm and pH at 5.8 to 6.2. Excessive fertilizer levels will result in large, lush leaves and smaller flower count, whereas fertilizer stress will cause very small leaves, hard plants and yellow lower leaves.

Chemical Sensitivity

Avoid using copper-based fungicides on alyssum.

Common Problems

Diseases: Downy Mildew. Also, a preventative fungicide application for damping-off during plug production is recommended.

Finishing Key Tips

Cool-season crop can be grown with little or no heat. Grow outdoors or at cool night temperatures for best colour development.

NOTE: Growers should use the information presented here as guidelines only. PanAmerican Seed recommends that growers conduct a trial of products under their own conditions. Crop times will vary depending on the climate, location, time of year, and greenhouse environmental conditions. It is the responsibility of the grower to read and follow all the current label directions relating to the products. Nothing herein shall be deemed a warranty or guaranty by PanAmerican Seed of any products listed herein. PanAmerican Seed's terms and conditions of sale shall apply to all products listed herein.

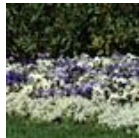
Variety Pictures



Snow Crystals



Snow Crystals



Snow Crystals

PanAmericanSeed™

PanAmerican Seed Co.
622 Town Road, West Chicago, Illinois, USA, 60185-2698
630 231-1400 Fax: 630 231-3609 PanAmSeed.com

™ denotes a trademark of and ® denotes a registered trademark of Ball Horticultural Company in the US. It may also be registered in other countries.
©2019 Ball Horticultural Company