

## Talinum Limón

(*Talinum paniculatum*)

Annuals Culture (revised 02/24/20)

**Plug crop time:** 5 weeks

**Transplant to finish:** Foliage 4 to 5 weeks; add 2 weeks to flower

- Mounded, bright lime-green foliage with airy inflorescences covered in tiny rose-pink flowers.
- Handles stress well, including heat and drought.
- When exposed to stressful conditions, the foliage shows off an even more vibrant chartreuse colour.
- Ideal for containers, hanging baskets and in-ground plantings.
- Also works well as a fresh or dried cut flower.

### General Information

Exposure	Bloom Season	Height	Spread	Spacing
Sun	Late Spring, Summer	28-32 in. (71-81 cm)	16-18 in. (41-46 cm)	14-16 in. (36-41 cm)

### Germination

Seed Form	Recommended Plug Size	Seeds/Cell	Plug Crop Weeks	Days to Germinate	Initial Media pH/EC (1:2)	Cover Seed
RAW	288	1	5	4-5	5.5-6.1 pH 0.75 mmhos/cm	Yes

### Plug Production

	Stage 1	Stage 2	Stage 3	Stage 4
<b>Moisture</b>	Level 4	Level 3-4	Level 2-4	Level 2-4
<b>Temperature</b>	68-74°F (20-23°C)	68-72°F (20-22°C)	66-70°F (19-21°C)	66-68°F (19-20°C)
<b>Light</b>	Optional	1,000-2,500 f.c. (10,800-26,900 Lux)	1,000-2,500 f.c. (10,800-26,900 Lux)	2,500-5,000 f.c. (26,900-53,800 Lux)
<b>Fertilizer</b>		Less than 100 ppm N (Less than 0.7 EC)	100 to 175 ppm N (0.7 to 1.2 EC)	100 to 175 ppm N (0.7 to 1.2 EC)

### Growing on to Finish

Growing on Temperature	Target Media pH/EC (1:2)	Fertilizer	Daylength
(day) 66-74°F (19-23°C) (night) 62-66°F (17-19°C)	5.5-6.2 pH 1.2-1.5 mmhos/cm	175 to 225 ppm N (1.2 to 1.5 EC)	Day Neutral

### Crop Scheduling

Container Size	Plugs/Pot	Crop Time	Season	PGR
306 Pack	1 (ppp)	4-5 (weeks)	Spring	-
4"/4.5"/Quart	1 (ppp)	4-5 (weeks)	Spring	-
5"/6"/1 Gallon	3 (ppp)	4-5 (weeks)	Spring	-

### Finishing Key Tips

For flowers, add 2 weeks to Finish Crop Time.

NOTE: Growers should use the information presented here as guidelines only. PanAmerican Seed recommends that growers conduct a trial of products under their own conditions. Crop times will vary depending on the climate, location, time of year, and greenhouse environmental conditions. It is the responsibility of the grower to confirm the treatment is available in their region as well as read and follow all the current label directions relating to the products. Nothing herein shall be deemed a warranty or guaranty by PanAmerican Seed of any products listed herein. PanAmerican Seed's terms and conditions of sale shall apply to all products listed herein.

## Variety Pictures

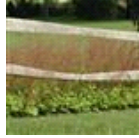
---



Limón



Limón



Limón

PanAmericanSeed™

PanAmerican Seed Co.  
622 Town Road, West Chicago, Illinois, USA, 60185-2698  
630 231-1400 Fax: 630 231-3609 [PanAmSeed.com](http://PanAmSeed.com)

™ denotes a trademark of and © denotes a registered trademark of Ball Horticultural Company in the US. It may also be registered in other countries.  
©2021 Ball Horticultural Company