

Tomato Topsy Tom F₁

(*Solanum lycopersicum*)

Vegetables Culture (revised 02/25/20)

- Perfect for “upside down” and traditional planters.
- Compact/mounded.
- Pliable stems ship well, hold abundant fruit, won’t break in wind.
- Continues to put out branches with many trusses of split-resistant, sweet fruit.

General Information

| Exposure | Bloom Season | Height | Spread | Spacing |
|----------|---------------------|-------------------------|--------------------------|---------|
| Sun | Summer, Late Summer | 12-18 in. (30-46 cm) | 36-60 in. (91-152 cm) | |

Germination

| Seed Form | Recommended Plug Size | Seeds/Cell | Plug Crop Weeks | Days from 50% to maximum germination | Initial Media pH/EC (1:2) | Cover Seed |
|-----------|-----------------------|------------|-----------------|--------------------------------------|----------------------------|-------------|
| RAW | 288 | 1 | 3-4 | 2-3 | 5.5-5.8 pH 0.5 mmhos/cm | Light cover |

Plug Production

| | Stage 1 | Stage 2 | Stage 3 | Stage 4 |
|--------------------|---|---|---|---|
| Moisture | Level 4 | Level 3-4 | Level 2-3 | Level 2-3 |
| Temperature | 70-75°F (21-24°C) | 68-72°F (20-22°C) | 68-72°F (20-22°C) | 65-68°F (18-20°C) |
| Light | Optional | 1,000-2,500 f.c. (10,800-26,900 Lux) | 1,000-2,500 f.c. (10,800-26,900 Lux) | 2,500-5,000 f.c. (26,900-53,800 Lux) |
| Fertilizer | Less than 100 ppm N (Less than 0.7 EC) | Less than 100 ppm N (Less than 0.7 EC) | Less than 100 ppm N (Less than 0.7 EC) | Less than 100 ppm N (Less than 0.7 EC) |

Fertilizer Notation

Tomatoes are very sensitive to high salts, particularly high ammonium, during germination. Keep ammonium level to less than 10 ppm.

Propagation Key Tips

Height can be controlled by withholding fertilizer, avoiding overwatering, growing under high light conditions and using DIF when possible. Topsy Tom is naturally compact and should not need PGRs.

Growing on to Finish

| Growing on Temperature | Target Media pH/EC (1:2) | Fertilizer | Daylength |
|--|---------------------------------|---|-----------|
| (day) 65-70°F (18-21°C) (night) 62-65°F (17-18°C) | 5.5-6.2 pH 0.75-1.0 mmhos/cm | Less than 100 ppm N (Less than 0.7 EC) | - |

Days to Ripe Fruit

50-55

Crop Scheduling

| Container Size | Plugs/Pot | Crop Time | Season | PGR |
|------------------------------|-----------|-------------|-------------|-----|
| Cell Pack | 1 (ppp) | 2-4 (weeks) | Spring | - |
| 4"/4.5"/Quart/10 cm | 1 (ppp) | 2-4 (weeks) | Spring | - |
| 5"/6"/1 Gallon/15 cm | 1 (ppp) | 4-6 (weeks) | Spring | - |
| 12" Pot or HB/5 Gallon/30 cm | 1 (ppp) | 6-8 (weeks) | Late Spring | - |

Finishing Key Tips

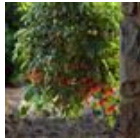
Superior variety for hanging baskets and patio planters. Performs well when grown upside-down.

NOTE: Growers should use the information presented here as guidelines only. PanAmerican Seed recommends that growers conduct a trial of products under their own conditions. Crop times will vary depending on the climate, location, time of year, and greenhouse environmental conditions. It is the responsibility of the grower to confirm the treatment is available in their region as well as read and follow all the current label directions relating to the products. Nothing herein shall be deemed a warranty or guaranty by PanAmerican Seed of any products listed herein. PanAmerican Seed's terms and conditions of sale shall apply to all products listed herein.

Variety Pictures



Topsy Tom



Topsy Tom

PanAmericanSeed™

PanAmerican Seed Co.
622 Town Road, West Chicago, Illinois, USA, 60185-2698
630 231-1400 Fax: 630 231-3609 PanAmSeed.com

™ denotes a trademark of and ® denotes a registered trademark of Ball Horticultural Company in the US. It may also be registered in other countries.
©2021 Ball Horticultural Company