

## Lavandula Bandera Series

(*Lavandula stoechas*)

Perennials Culture (revised 10/14/25)

### Save time with seed *L. stoechas*

Professional-quality *L. stoechas* Bandera is an excellent seed option for this class. This compact, bushy, no-pinch plant has great flower power just 11 to 14 weeks from transplant, and it's quick to finish compared to the vegetative options. Plus, no pinch means less production time, making it an all-around perennial star!

**Plug crop time:** 6 to 7 weeks

**Transplant to finish:** 11 to 14 weeks (28 to 35 weeks overwintered, only in high light/low humidity areas)

- Professional-quality seed *L. stoechas* series produces quality comparable to vegetative varieties.
- Compact to medium habit with good branching and uniformity; it easily fills 4-in./10-cm pots to gallons.
- One to three weeks earlier to flower than the competition.
- Flowers heavily to almost cover the plant.
- Short harvest window fits for bench run programs.
- Long-flowering and self-cleaning with good secondary flush of flowers.
- Holds dense, mounded habit in the garden without falling open.
- A “*Gateway to Gardening*” variety for young shoppers – attention-getting nursery and grocery store impulse item, gift plant and indoor potted plant.

## General Information

Exposure	Bloom Season	Height	Spread	Spacing
Sun	Early Spring, Spring, Late Spring, Summer	7-9 in. (18-23 cm)	10-12 in. (25-30 cm)	12-14 in. (30-36 cm)

## Germination

Seed Form	Recommended Plug Size	Seeds/Cell	Plug Crop Weeks	Days from 50% to maximum germination	Initial Media pH/EC (1:2)	Cover Seed
RAW	288 128*	1 1	6-7 7-8	3-5	5.5-6.2 pH 1.0-1.2 mmhos/cm	Yes

\* Recommend plug size for forcing.

## Plug Production

	Stage 1	Stage 2	Stage 3	Stage 4
<b>Moisture</b>	Level 4	Level 3	Level 2	Level 2
<b>Temperature</b>	65-68°F (18-20°C)	60-65°F (16-18°C)	60-65°F (16-18°C)	60-65°F (16-18°C)
<b>Light</b>	Light	2,000-2,500 f.c. (21,500-26,900 Lux)	2,000-2,500 f.c. (21,500-26,900 Lux)	4,000-5,000 f.c. (43,100-53,800 Lux)
<b>Fertiliser</b>		100 to 175 ppm N (0.7 to 1.2 EC)	100 to 175 ppm N (0.7 to 1.2 EC)	100 to 175 ppm N (0.7 to 1.2 EC)

## Vernalisation

No

## Propagation Key Tips

At sowing, do not cover the seeds too heavily, as it will significantly decrease germination.

At Stage 1 germination, pull from the germination chamber at 10 to 15% visible radicle emergence and grow at 60 to 65°F (16 to 18°C) to avoid stretch. *L. stoechas* may stretch easily at higher temperatures in the early plug phase.

Keep active growing environment. Spray damp-off fungicide. Genetically compact plants should not need PGRs in plug production. If needed, use daminozide spray 2,500 ppm. High pH (> 6.8) causes chlorosis.

For forcing info: See Perennials Forcing Guide.

See Lavender Scheduling Tool at panamseed.com for finishing schedules by region.

## Growing on to Finish

Growing on Temperature	Target Media pH/EC (1:2)	Fertiliser	Daylength
(day) 65-68°F (18-20°C) (night) 55-64°F (13-18°C)	5.5-6.0 pH 1.0-1.2 mmhos/cm	100 to 175 ppm N (0.7 to 1.2 EC)	Facultative Long Day

### Daylength Notation

See Lavender Scheduling Tool at panamseed.com for finishing schedules by region. Long day beneficial, but will flower in short days.

## Crop Scheduling

Crop Type	Container Size	Plugs/Pot	Crop Time	Season	PGR
Annual	4"/4.5"/Quart/10 cm	1 (ppp)	12-14 (weeks)	Spring	-
Overwinter	4"/4.5"/Quart/10 cm	1 (ppp)	24-32 (weeks)	Early Spring	-
Annual	5"/6"/1 Gallon/15 cm	1-3 (ppp)	12-14 (weeks)	Spring	-

### Fertiliser Notation

Bandera generally needs light to moderate fertilisation. Apply fertiliser at rate 2 (145 to 175 ppm N; 1.0 to 1.2 mmhos/cm). Increase potassium -to-nitrate ratio in later growing-on stage.

### Chemical Sensitivity

Genetically compact and branching; grow in an active climate and use caution with high concentrations of PGR in plug or finished stage.

### Common Problems

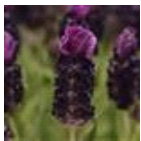
Flag size too short due to higher ADT; grow cool to have optimum flag size. See Lavender scheduling tool for indicated growing schedule per region. Insects: Mites, Aphids Disease: Botrytis, Colletotrichum, Phytophthora, Leafspot, Root Rot

### Finishing Key Tips

Don't plant too deep since Bandera has low and deep branching, and Botrytis could more easily affect plants. Need cool production to reach sufficient flag size, see Scheduling tool. High pH (above 6.8) can cause leaf chlorosis.

NOTE: Growers should use the information presented here as guidelines only. PanAmerican Seed recommends that growers conduct a trial of products under their own conditions. Crop times will vary depending on the climate, location, time of year, and greenhouse environmental conditions. It is the responsibility of the grower to confirm the treatment is available in their region as well as read and follow all the current label directions relating to the products. Nothing herein shall be deemed a warranty or guaranty by PanAmerican Seed of any products listed herein. PanAmerican Seed's terms and conditions of sale shall apply to all products listed herein.

## Variety Pictures



Deep Purple



Deep Rose



Purple



PanAmerican Seed Co.  
622 Town Road, West Chicago, Illinois, USA, 60185  
+1 800-231-7065 PanAmSeed.com

™ denotes a trademark of and © denotes a registered trademark of Ball Horticultural Company in the US. It may also be registered in other countries.  
©2026 Ball Horticultural Company