

Impatiens Beacon® F₁ Series

(*Impatiens walleriana*)

Annuals Culture (revised 07/23/19)

High resistance to Impatiens downy mildew!

Bring *Impatiens walleriana* back into production without the risk of disease! Beacon impatiens offers **high resistance** to the currently known and widely prevalent populations of *Plasmopara obducens*, which cause **Impatiens downy mildew**. For lasting colour, you can rely on Beacon impatiens to thrive. Visit BeaconImpatiens.com for more information.

Plug crop time: 4 to 5 weeks

Transplant to finish: 3 to 4 weeks

- Beacon impatiens exhibits high resistance to the currently known and widely prevalent populations of *Plasmopara obducens*, which cause Impatiens downy mildew.
- Beacon impatiens offers the opportunity to bring back into production a well-known, in-demand, easy-to-grow and versatile product for increased sales.
- Extensive trialing has proven that Beacon impatiens provides genetic high resistance to IDM without the use of chemicals, and it can be grown like you used to grow impatiens without fungicides or any special care regimen.
- With a plant structure, flowering time, flower size and crop culture that is similar to Super Elfin, Beacon impatiens is easy to incorporate into production planning.
- Offers season-long colour, and it brings back fast-filling colour to gardens and landscapes.

General Information

Exposure	Bloom Season	Height	Spread	Spacing
Shade, Sun	Spring, Late Spring, Summer, Late Summer	15-20 in. (38-51 cm)	12-14 in. (30-36 cm)	8-10 in. (20-25 cm)

Germination

Seed Form	Recommended Plug Size	Seeds/Cell	Plug Crop Weeks	Days to Germinate	Initial Media pH/EC	Cover Seed
RAW	288	1	4-5	3-5	6.0-6.2 pH 0.5-0.75 mmhos/cm	No

Plug Production

	Stage 1	Stage 2	Stage 3	Stage 4
Moisture	Level 4-5	Level 2-4	Level 2-3	Level 2-3
Temperature	72-76°F (22-24° C)	70-72°F (21-22°C)	68-70°F (20-21°C)	62-65°F (17-18°C)
Light	Optional	450-700 f.c. (4,800-7,500 Lux)	450-700 f.c. (4,800-7,500 Lux)	450-700 f.c. (4,800-7,500 Lux)
Fertilizer		Less than 100 ppm N - Less than 0.7 EC	Less than 100 ppm N - Less than 0.7 EC	Less than 100 ppm N - Less than 0.7 EC

Propagation Key Tips

Do not cover seed.

Growing on to Finish

Growing on Temperature	Target Media pH/EC	Fertilizer	Daylength
(day) 70-75°F (21-24°C) (night) 62-68°F (17-20°C)	6.2-6.5 pH 0.75-1.0 mmhos/cm	Less than 100 ppm N - Less than 0.7 EC	Day Neutral

Crop Scheduling

Container Size	Plugs/Pot	Crop Time	Season	PGR
Cell Pack	1 (ppp)	3-4 (weeks)	Spring	-
4"/4.5"/Quart	1 (ppp)	4-5 (weeks)	Spring	-
10" Pot or HB/3 Gallon	3-5 (ppp)	8-10 (weeks)	Spring	-

Finishing Key Tips

Impatiens will respond to daminozide, paclobutrazol and uniconazol. Monitoring of water and fertilization can help with controlling plant growth and vigour.

NOTE: Growers should use the information presented here as guidelines only. PanAmerican Seed recommends that growers conduct a trial of products under their own conditions. Crop times will vary depending on the climate, location, time of year, and greenhouse environmental conditions. It is the responsibility of the grower to confirm the treatment is available in their region as well as read and follow all the current label directions relating to the products. Nothing herein shall be deemed a warranty or guaranty by PanAmerican Seed of any products listed herein. PanAmerican Seed's terms and conditions of sale shall apply to all products listed herein.

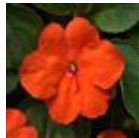
Variety Pictures



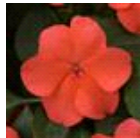
Bright Red



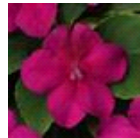
Coral



Orange



Salmon



Violet Shades



White



Red White
Mixture



Select Mixture

PanAmericanSeed™

PanAmerican Seed Co.
622 Town Road, West Chicago, Illinois, USA, 60185-2698
630 231-1400 Fax: 630 231-3609 PanAmSeed.com

™ denotes a trademark of and ® denotes a registered trademark of Ball Horticultural Company in the US. It may also be registered in other countries.
©2019 Ball Horticultural Company