



BEACON<sup>®</sup>

IMPATIENS

from PanAmerican Seed<sup>®</sup>

**SHINE THE LIGHT ON  
COLOR IN THE SHADE!**



# ***IMPATIENS WALLERIANA...***

Beacon® Impatiens has high resistance to Impatiens downy mildew, so it stays healthy and in color.

# **...GROW WITH EASE WITHOUT DISEASE!**

Grow Impatiens successfully without preventative Impatiens downy mildew fungicide applications.

For growers and landscapers, there will be no costly middle-of-the-season replacements with Beacon Impatiens.

Home gardeners can rely on Beacon Impatiens for season-long performance and fast fill in gardens.

Beacon® Impatiens from PanAmerican Seed®



# BEACON CARES

**beacon** noun  
bea·con | /ˈbēkən  
a source of light and inspiration

Beacon Impatiens offers high resistance to the widely prevalent populations of *Plasmopara destructor*, the cause of Impatiens downy mildew, offering the opportunity to bring back into production a well-known, in-demand, easy-to-grow and versatile product for gardens and landscapes.

**Your Beacon purchase also shines a light for those with low-vision challenges.**

In the spirit of bringing light and inspiration to gardens everywhere, PanAmerican Seed® donates a percentage of its global Beacon Impatiens sales to less-widely known charitable organizations each year. For the 2022 garden season, PanAmerican Seed is partnering with two foundations that help individuals who are battling decreases in eyesight and vision capabilities, such as macular degeneration, a disease affecting millions of people worldwide, including one of our own team members.

## Spectrios Institute for Low Vision

(Illinois, USA) supports children and adults with vision loss to optimize their visual capabilities and independence through the use of prescriptive tools, technology and rehabilitative training.



## The Macular Society

(United Kingdom) provides funding for world-class research and patient support, helping individuals beat the fear and isolation caused by macular disease.



## NEW LIGHTHOUSE MIXES

Named after well-known lighthouses in locations where Impatiens downy mildew has been a significant problem.



## A COLORFUL SELECTION



Beacon Impatiens brings vibrant, long-lasting color to shade gardens and landscapes.



Find out how you can help!

GROWS STRONGER, SHINES LONGER



# TRIAL RESULTS

# CULTURE PRACTICES FOR GROWING BEACON IMPATIENS

In our extensive trials process, young Beacon Impatiens plants were challenged with aerial inoculation of *Plasmopara destructor* sporangia under high disease pressure in environmentally controlled conditions. Resistance screens were conducted in Venhuizen, Netherlands and Elburn, Illinois greenhouses and in

the Ball Helix laboratory in West Chicago, Illinois. All hybrids were screened a minimum of 16 times. The results showed a high correlation between the greenhouse/lab screens and field screens. Without any use of chemicals, Beacon Impatiens showed high resistance to Impatiens downy mildew in all of these trials.

## GREENHOUSE DEMONSTRATIONS

**4 weeks after inoculation**  
Beacon® is thriving, Venhuizen, NL, Week 9, 2018



Super Elfin® XP Salmon vs. Beacon® Coral



Super Elfin® Bright Orange vs. Beacon® Orange

## CONTAINER DEMONSTRATIONS

**9 weeks after transplant**  
Beacon® is thriving, Venhuizen, NL, Week 35, 2018



Super Elfin® XP Violet (Top) vs. Beacon® Violet Shades



Beacon® Orange (Top) vs. Super Elfin® Bright Orange

## LANDSCAPE/FIELD DEMONSTRATIONS NATURAL INFECTION

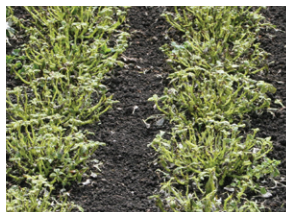
**7 weeks after transplant**  
Beacon® is thriving, Elburn, IL, Week 32, 2018



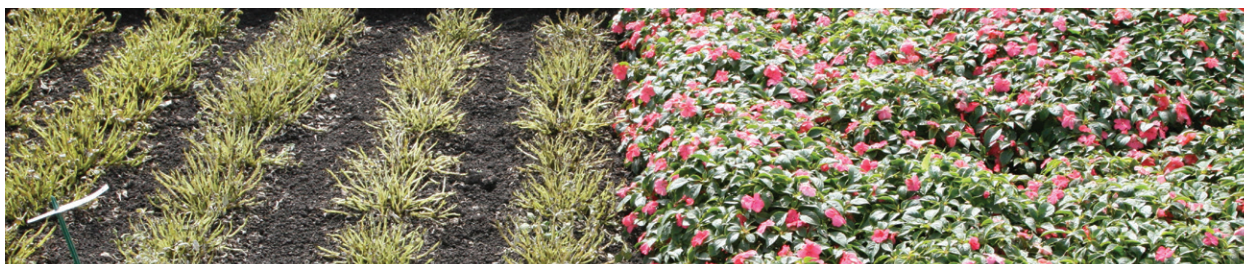
Super Elfin® XP White vs. Beacon® White



**11 weeks after transplant**  
Beacon® is thriving, Venhuizen, NL, Week 36, 2018



Super Elfin® XP White vs. Beacon® White



Super Elfin® XP Salmon vs. Beacon® Coral

In both field trials, no Impatiens downy mildew preventative fungicides were ever applied to the plant material.

## IMPATIENS

*Impatiens walleriana*



## Beacon® Series F<sub>1</sub>

Beacon is easy to include in your current production, as it offers similar plant structure, flowering time, flower size and crop culture to Super Elfin® Impatiens. Below are the general greenhouse guidelines to bring Impatiens back without the risk of disease.

**Plug crop time:** 4 to 5 weeks  
**Transplant to finish:** 3 to 4 weeks

## PLUG CULTURE

Beacon Impatiens is offered in coated seed form. Sow 1 seed per cell in a recommended 288 plug size. It germinates at 68-77°F (20-25°C) and takes 3-5 days; do not cover the seed. Light is optional using 450-700 f.c. Maintain the media pH at 6.0-6.2 and EC of 0.75-1.0 mmhos/cm during plug production. Keep moisture high at Level 4-5.

During **Stage 2**, provide moisture levels at 2-4 with temperatures at 64-73°F (18-23°C). Set light at 450-700 f.c. (4,800-7,500 Lux). Apply fertilizer less than 100 ppm N, less than 0.7 EC. Temperatures drop to 68-70°F (20-21°C) during **Stage 3**, with light and fertilizer regimens maintained the same as Stage 2. Set moisture at Level 2-3.

In **Stage 4**, keep moisture at Level 2-3 and lower temperatures again to 62-65°F (17-18°C). Light and fertilizer is the same as Stage 2 and 3.

## PGR

Impatiens will respond to daminozide, paclobutrazol and uniconazole. Monitoring of water and fertilization can help with controlling plant growth and vigor.

Visit [panamseed.com](http://panamseed.com) for current Terms & Conditions of Sale. <sup>TM</sup> denotes a trademark and ® denotes a registered trademark of Ball Horticultural Company in the U.S., which may also be registered in other countries.

## GROWING ON TO FINISH

Temperatures for finishing Beacon Impatiens: **Day:** 70-75°F (21-24°C) **Night:** 62-68°F (17-20°C) The target media pH should be 6.2-6.5, with an EC of 0.75-1.0 mmhos/cm. Apply a fertilizer less than 100 ppm N, less than 0.7 EC. Beacon Impatiens are Day Neutral.

## PREVENTATIVE CHEMICALS

Beacon exhibits high genetic resistance to Impatiens downy mildew without the use of chemicals. Beacon can be grown successfully without preventative IDM fungicide applications. Beacon is not immune to IDM; there are scenarios where preventive IDM fungicides may be recommended for Beacon:

- 1) Receiving plugs or plants from a region where Impatiens are currently growing in the landscape and susceptible varieties are being grown at the recipient location.
- 2) Plugs or plants are being produced where Impatiens are currently growing in the landscape (which could expose greenhouse or nursery-grown plants to high levels of natural inoculum), and then shipping to other regions.

If IDM prevention is part of an overall spray program for susceptible varieties, Beacon's performance will not be affected if they are also treated.

Proper Impatiens production management practices are important for success. This includes water, fertilization and growth regulation best practices. In addition, regular scouting and environmental and cultural controls are recommended. If IDM, or any other diseases, are detected, take action to mitigate the spread and severity.

## CROP SCHEDULING

CONTAINER SIZE	PLUGS/POT	CROP TIME	SEASON
Cell Pack	1 ppp	3-4 weeks	Spring
4"/4.5"/Quart	1 ppp	4-5 weeks	Spring
10" Pot or HB/3 Gallon	3-5 ppp	8-10 weeks	Spring

Get your disease-resistant Impatiens with color that lasts.

Order Beacon Impatiens seed and plugs from your preferred distributor today.



# PanAmerican Seed®

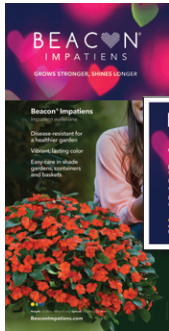
622 Town Road • West Chicago, Illinois 60185-2698 USA

630 231-1400 or 800 231-7065

Fax: 630 293-2557

**panamseed.com**

**Bring *Impatiens walleriana* back into  
production without the risk of disease!**



Call out Beacon Impatiens by  
name with tags, bench cards,  
posters and pack handles.



**Check out our  
retail display items.**