



GrowerFacts Extra Hibiscus Luna

Additional Culture Research
from

PanAmerican Seed®

Hibiscus Luna

Recommended Culture, published 2019

PanAmericanSeed.

ANNUALS

OBJECTIVE

To develop culture recommendations for Hibiscus Luna

- Red
- Rose
- Pink Swirl
- White
- Mix



Hibiscus Luna

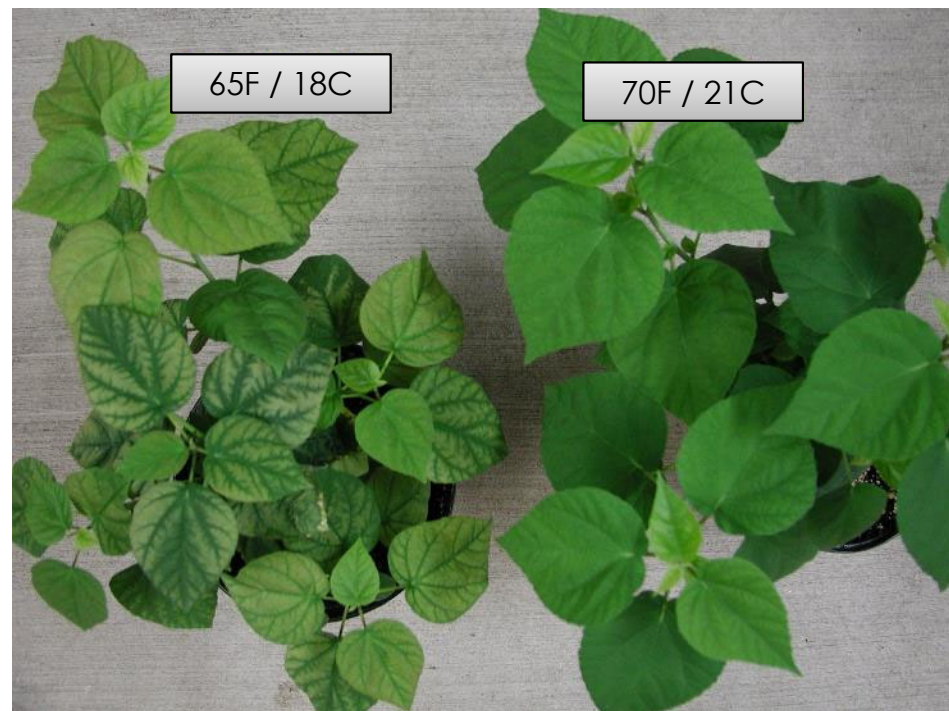
Recommended Culture, published 2019

PanAmericanSeed.

ANNUALS

TEMPERATURE

- Luna Hibiscus prefers warm temperatures.
- An average daily temperature above 68 °F is recommended.
- Growing below 68 °F causes foliage chlorosis or bronzing and long crop time.



Hibiscus Luna

Recommended Culture, published 2019

PanAmericanSeed.

ANNUALS

PLUG STAGE PLANT GROWTH REGULATOR

- Luna Hibiscus requires PGR to control plug and finish plant size.
- Chlormequat chloride (CCC) sprayed 10 days after sowing at 300ppm yields compact plugs.
- A tank mix of daminozide at 2500 ppm and CCC at 750-1000 ppm sprayed at 2 and 4 weeks after transplant controls plant height and yields darker green foliage.



Hibiscus Luna

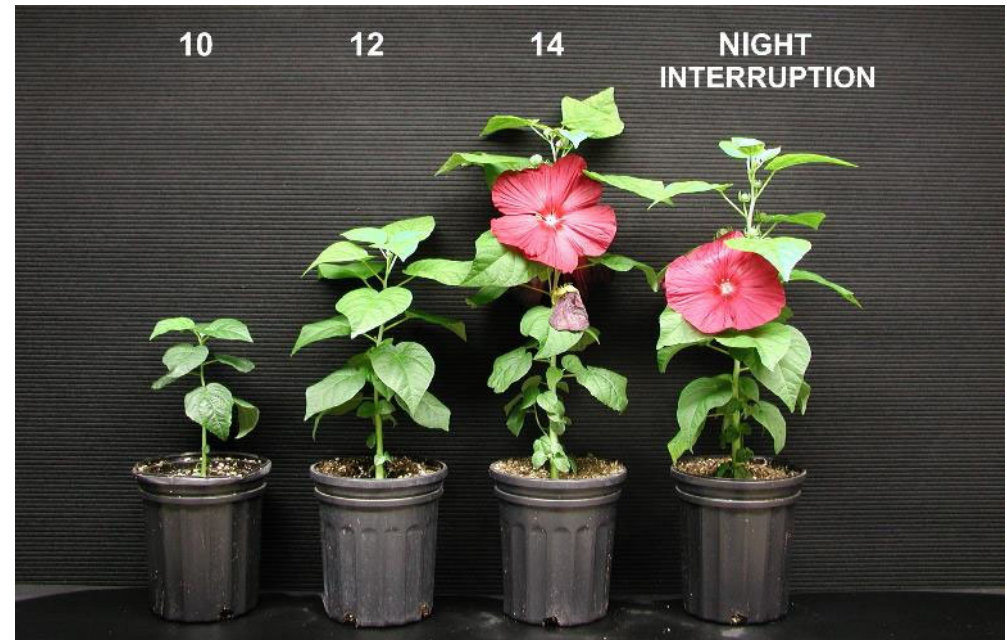
Recommended Culture, published 2019

PanAmericanSeed.

ANNUALS

PHOTOPERIOD RESPONSE

- Luna is a long day plant and requires ≥ 14 -hour photoperiod to flower under lower light intensity.
- Under high light intensity plants flower under ≥ 12 hours.
- Plants become dormant at ≤ 10 hours.



Hibiscus Luna

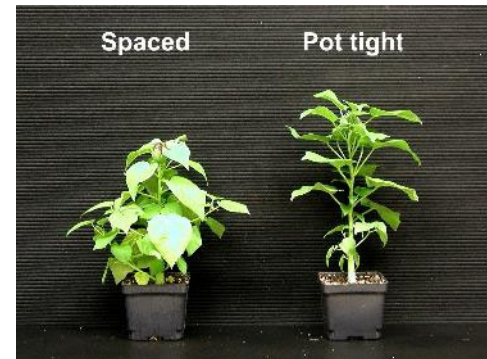
Recommended Culture, published 2019

PanAmericanSeed.

ANNUALS

HIGH LIGHT AND SPACING

- High light promoted branching and reduced plant height.
- Appropriate spacing of plants is recommended to allow light penetration across canopy.



Hibiscus Luna

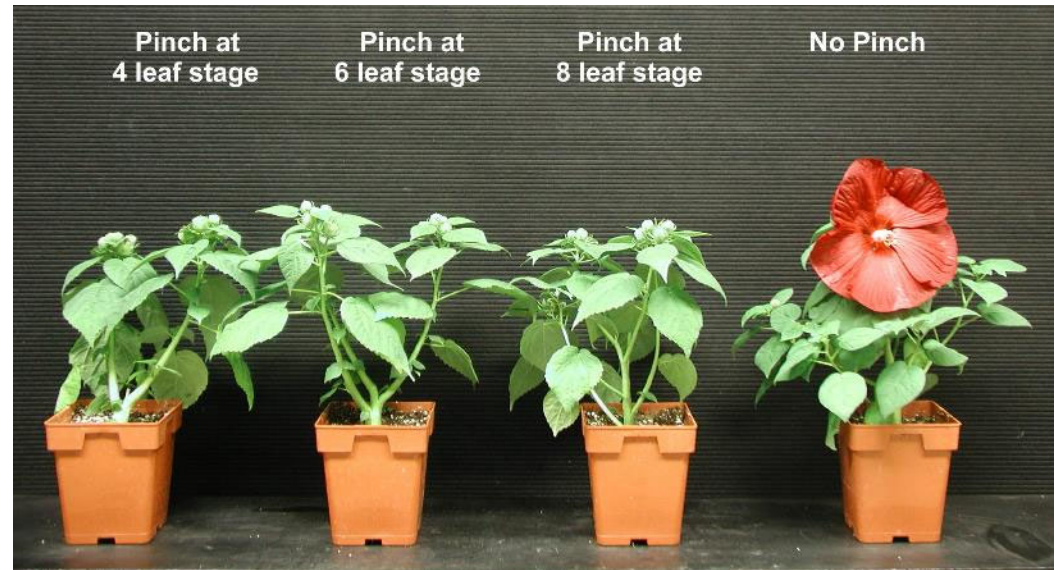
Recommended Culture, published 2019

PanAmericanSeed.

ANNUALS

PINCHING

- Luna branches naturally without pinching and pinching can cause poor branching if done too early (<6-8 leaves).
- Pinching delays flowering by 7-10 days.
- PGR application at plug stage works better to control plant stretch than pinching.



Hibiscus Luna

Recommended Culture, published 2019

PanAmericanSeed.

ANNUALS

WATER STRESS

- Hibiscus is a native marshland plant.
- It can survive under wet and waterlogged conditions and is sensitive to drought.
- Buds became yellow and abort after two cycles of wilt.
- Once planted outside, established plants with vigorous root systems can tolerate drier conditions.



Saturated Conditions



Drought Conditions
(yellow buds)